

A NEW *BOTHROPS* FROM BRAZIL. *BOTHROPS BRAZILI*, SP. NOV.

A. R. HOGE

(Departament of Ophiology, Instituto Butantan, S. Paulo, Brazil)

Among the small collection of snakes received from the Cooperativa Agrícola "Tomé Assú", a new species had been discovered which is desirable to describe and name at present time.

Bothrops brazili, sp. nov. (*)

Holotype — N.º 14.721 in the Butantan Institute, a ♀ from Tomé Assú, Acará Mirim River, State of Pará, Brazil.

Allotype — N.º 14.715 in the Butantan Institute collection, a ♂ from the same locality as holotype.

Diagnosis — A *Bothrops* without nasal pore; subcaudals in two rows; 2nd upper labial forming the anterior border of loreal pit; a very enlarged canthal. This species is allied to *Bothrops jararacussu* (Lacerda) but easily distinguished from it by the different shape of skull, pattern and colour.

At first glance *B. brazili* is very similar in pattern to *B. neglecta* Amaral and *B. pirajai* Amaral but easily distinguished by the absence of nasal pore in *B. brazili*.

Description of holotype — Internasals small, in contact behind the rostral which is deeper than broad; 2nd canthal very large, a little longer than broad, separated from its fellow by three keeled scales (in front only two; supraoculars large, longer than broad, separated by 8 keeled scales; top of head and neck covered with small keeled scales; 8-9 upper labials, 2nd forming the anterior border of loreal pit; first upper labial as deep as long, all other labials, except the last, deeper than long; 11-10 lower labials, two anterior in contact behind the symphysial; nasal divided without pore, separated from the 2nd upper labial by a series of three diminute scales; dorsal scales

(*) Dedicated to Dr. Vital Brazil, founder of the Instituto Butantan.

Received for publication on July, 1953.

strongly keeled in 28 on the neck, 26 at midbody and 20 series at anus. The keels of scales are very similar to those of *Lachesis muta* (L.). Ventrals 179; caudals 54/54; anal single. Ground colour pale brown, nearly white when "stratum corneum" is lacking; 14 blotches (for shape see Fig. 4) on the body and 14 on the tail (Fig. 7); belly white, powdered with brown on the sides (Fig. 5).

Head of the ground colour without markings, chin white; lower parts of tail white gradually powdered with brown posteriorly (Fig. 5).

Length of body (head inclusive) 1.003 mm.; tail 155 mm.

Allotype — N.^o 14.715, ♂. Dorsals 25; ventrals 175; anal single; caudals 59/59+5; 8 upper labials, the second forming anterior border of the loreal pit, but at the left side the second upper labial is semi-divided; 12-11 lower labials; length of body + head 672 mm.; tail 120 mm.; head 35 mm. Colour and patterns nearly the same as holotype but dorsal markings a little smaller downwards. Other difference in caudals and ventrals are doubtless sexual dimorphism.

RESUMO

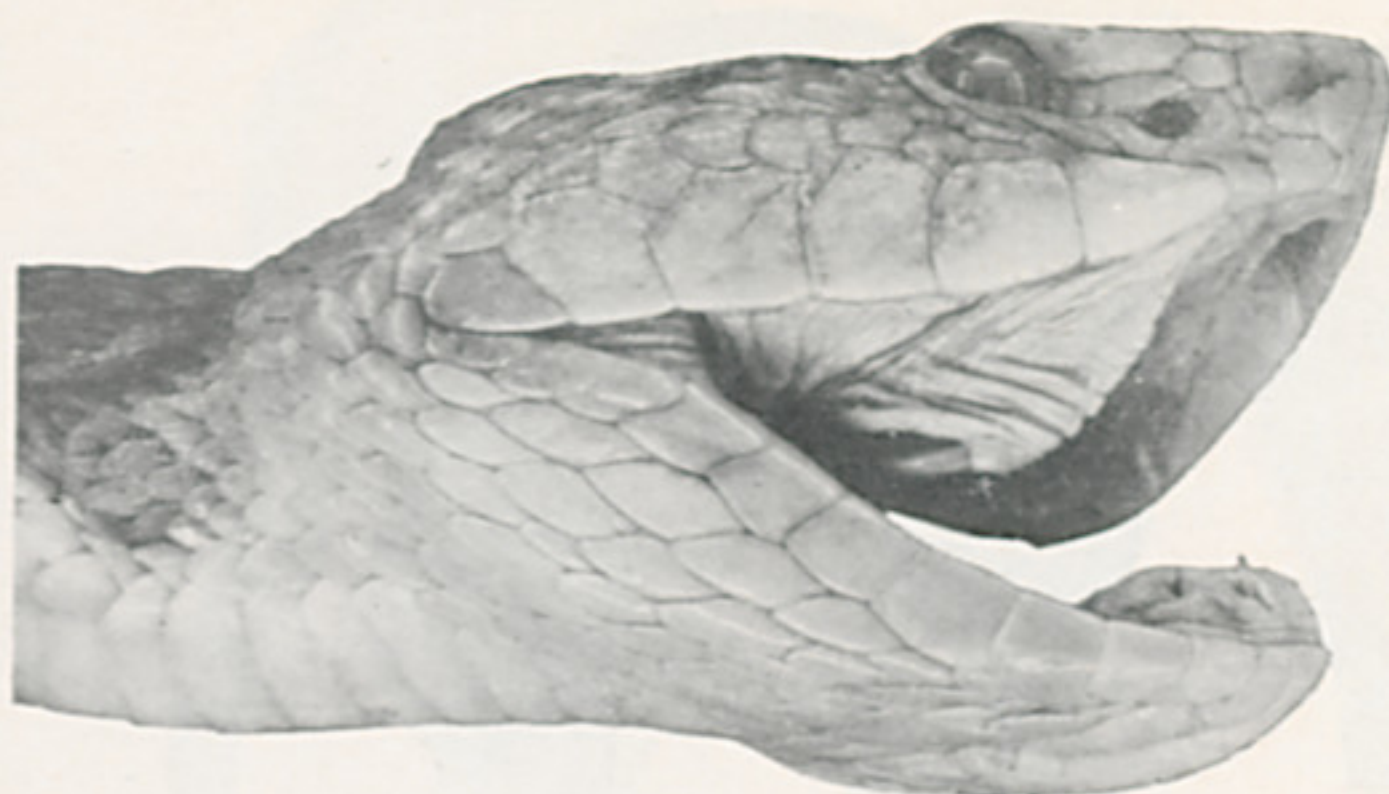
Descrição de uma nova espécie de *Bothrops*, *B. brazili*, procedente de Tomé Assú, Estado do Pará, Brasil.

A nova espécie é próxima a *B. jararacussu* (Lacerda) porém diferente pelo formato do crânio, desenho, colorido e tipo de carenas.

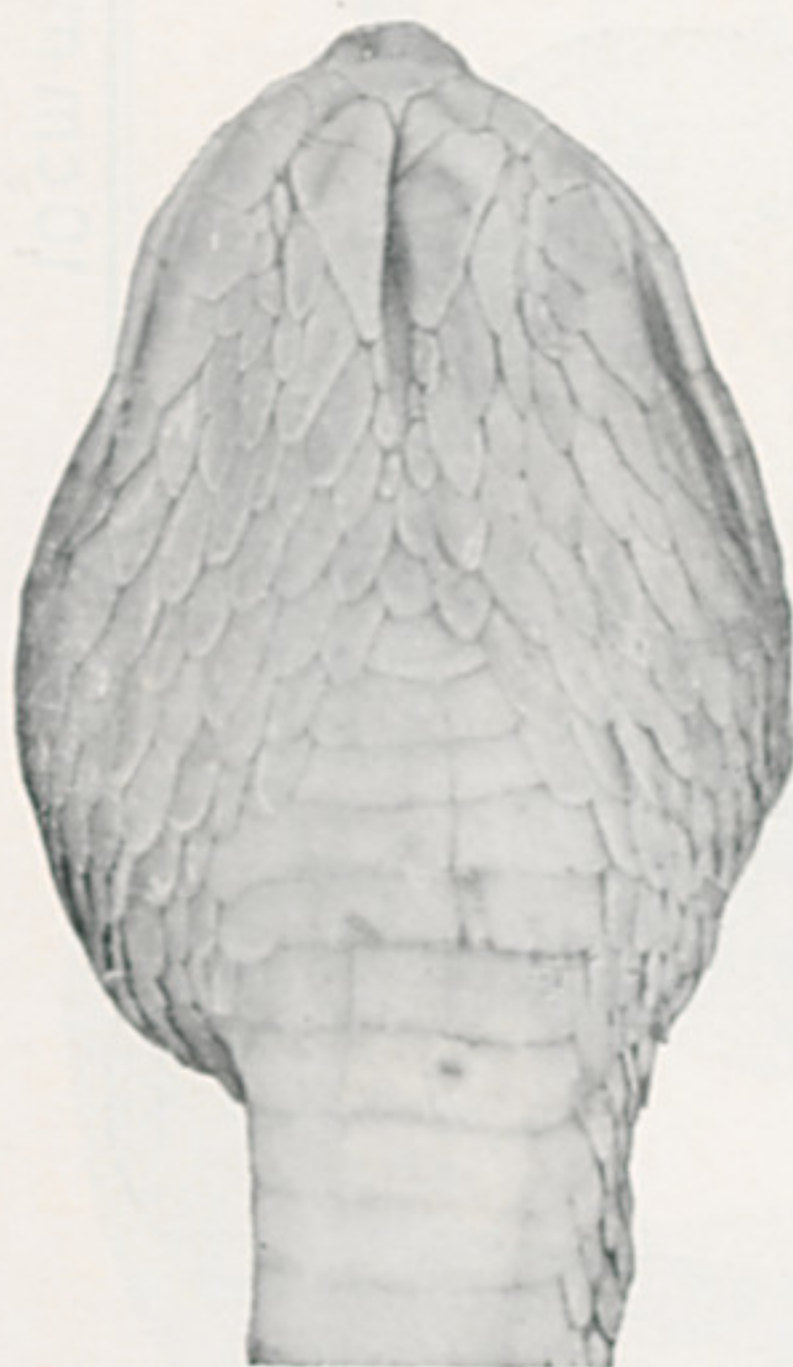
Acknowledgements — We are indebted to Mr. Francisco Alves Soares, Director of the "Colônia Estadual Tomé Assú" and Mr. Hiraga Renkichi, President of the "Cooperativa de Tomé Assú" for the gift of a small collection of snakes.

BIBLIOGRAPHY

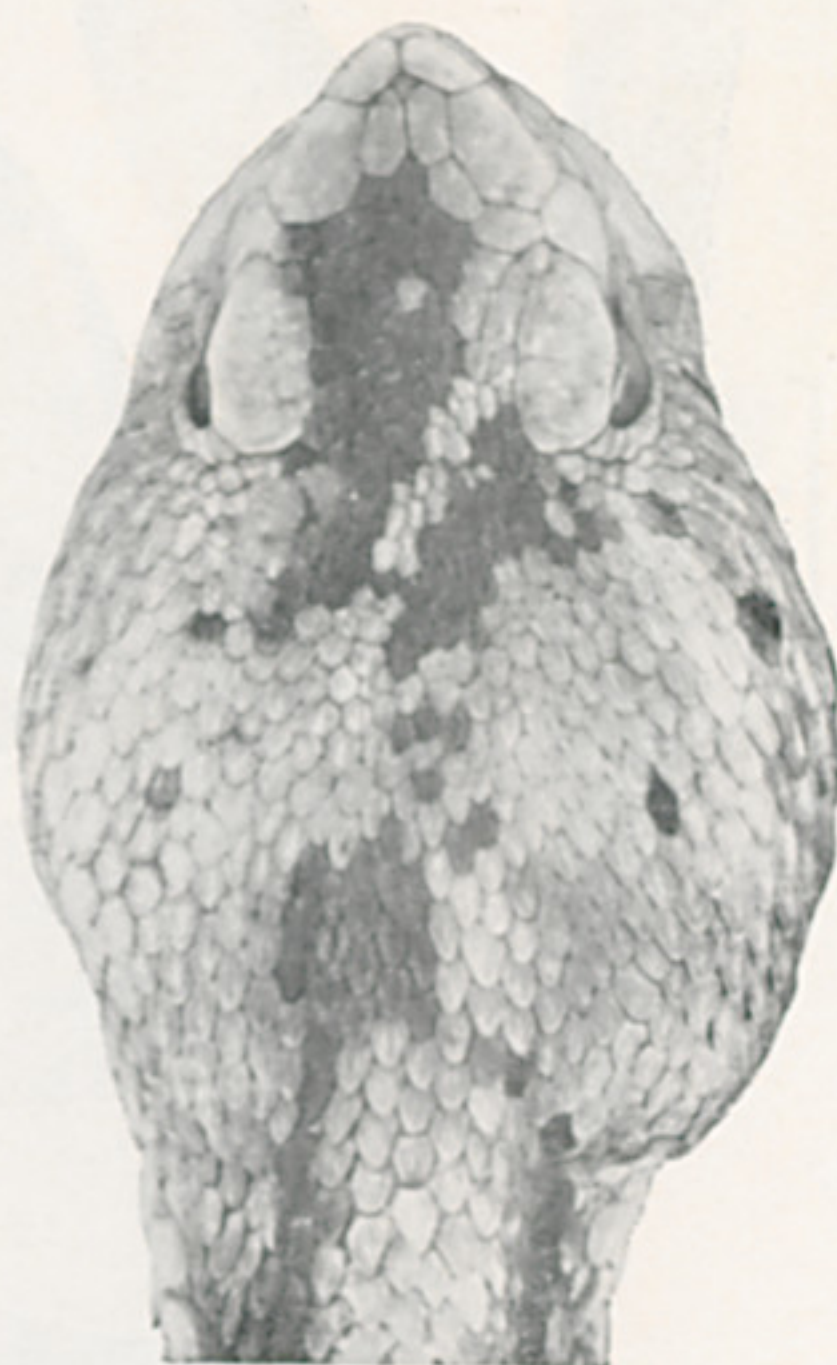
Amaral, A. do — New Genera and Species of Snakes — *Proc. New England Zool. Club* 8: 100, 1923.



1



2



3

2 cm ±

Fig. 1 — Photography *Bothrops brazili*, lateral view of head (Holotype).

Fig. 2 — Photography *Bothrops brazili*, ventral view of head (Holotype).

Fig. 3 — Photography *Bothrops brazili*, dorsal view of head (Holotype).

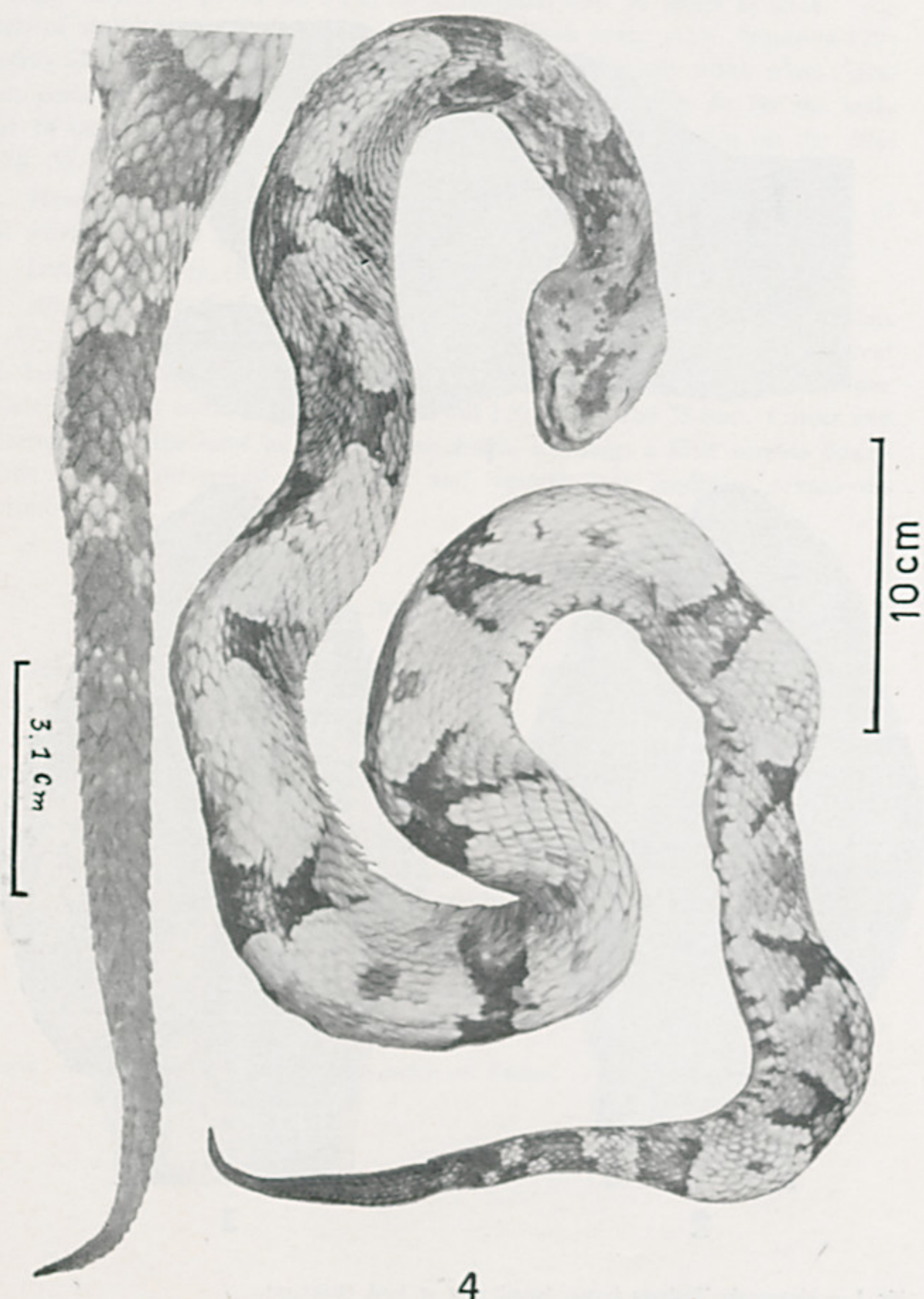
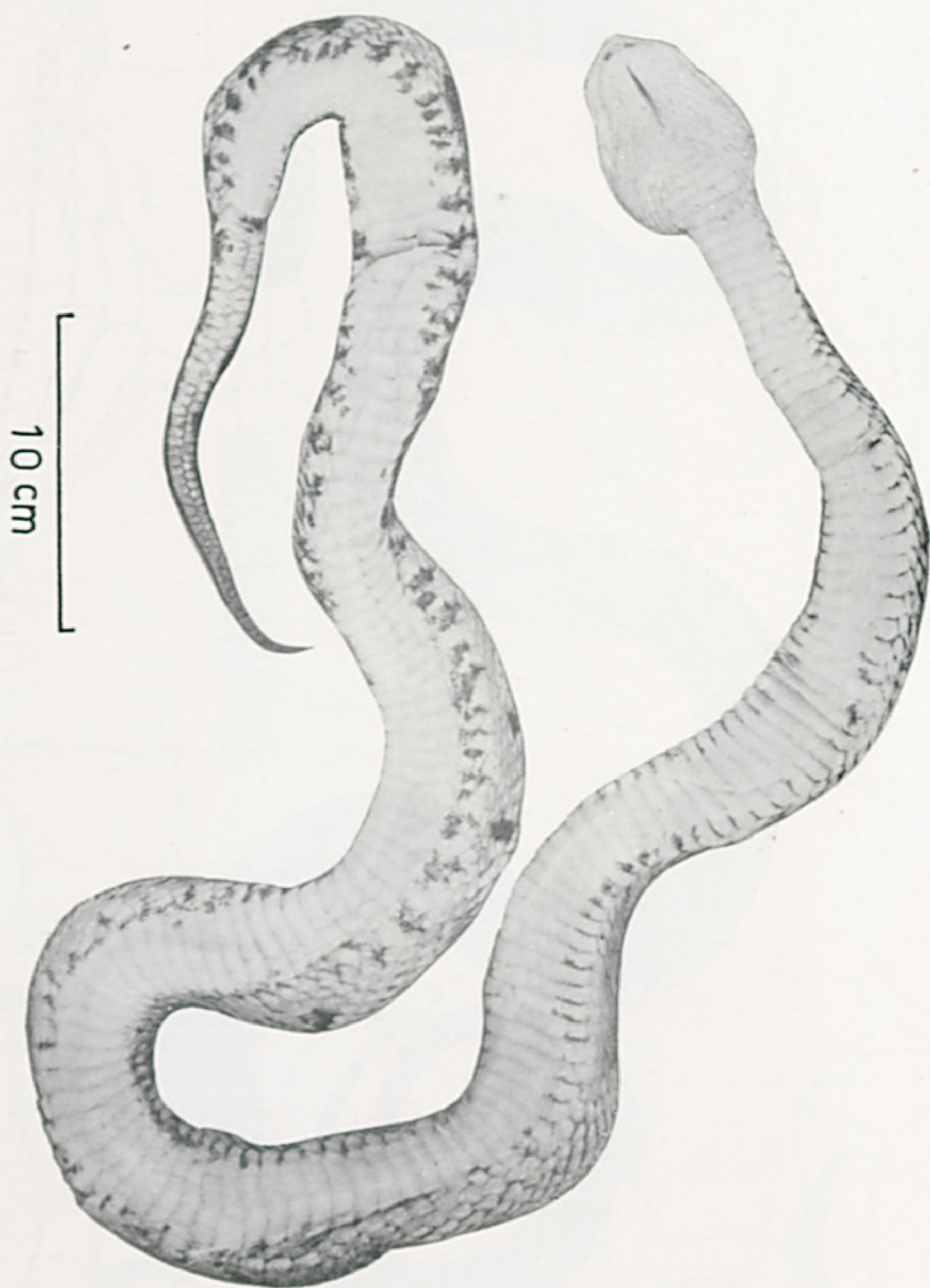


Fig. 4 — Photography *Bothrops brazili*, dorsal view and detail of tail (Holotype).



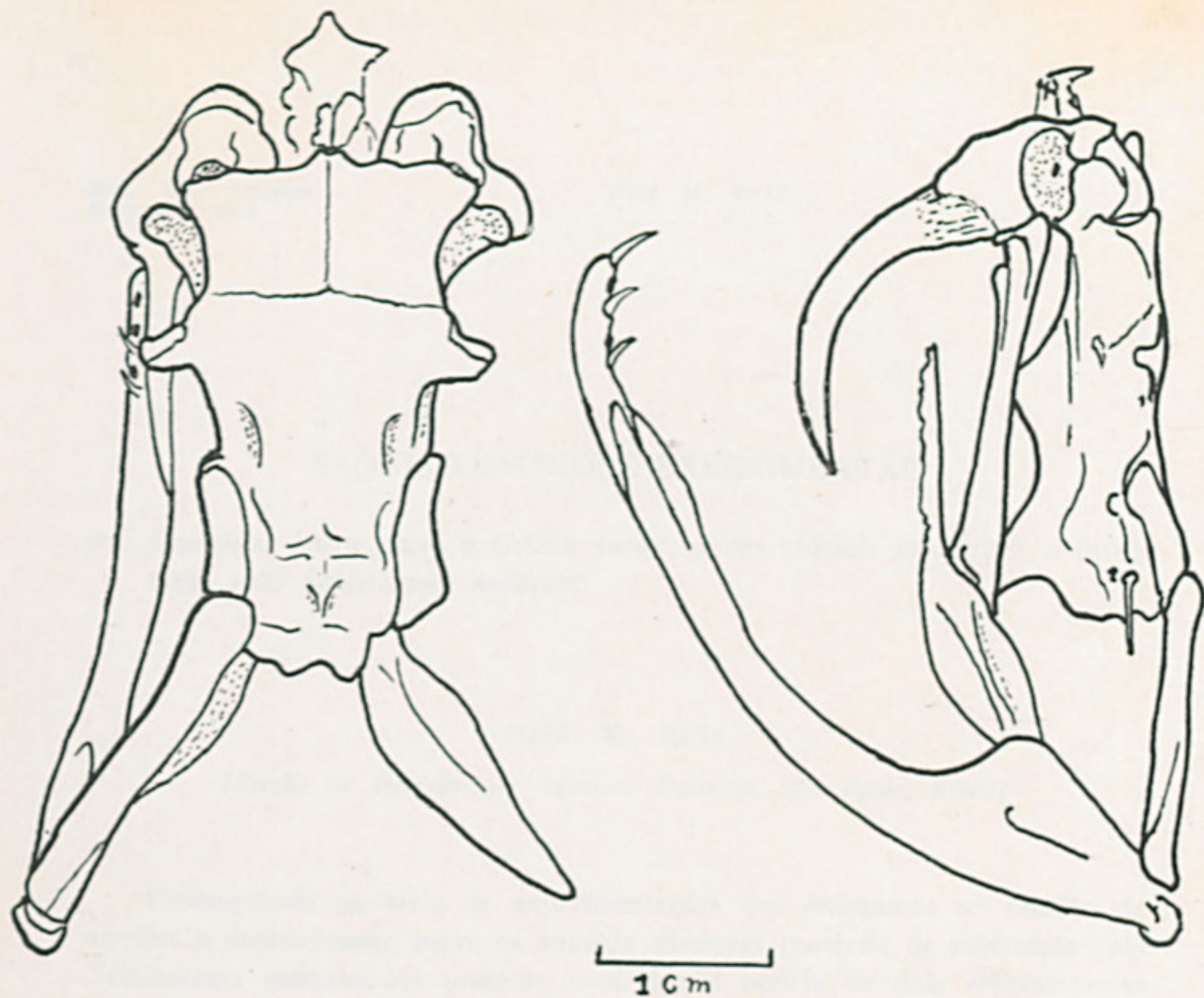
5

Fig. 5 — Photography *Bothrops brazili*, ventral view (Holotype).



6

Fig. 6 — Photography *Bothrops brazili*, dorsal view (Allotype).



Skull of *Bothrops brazili* (Holotype)

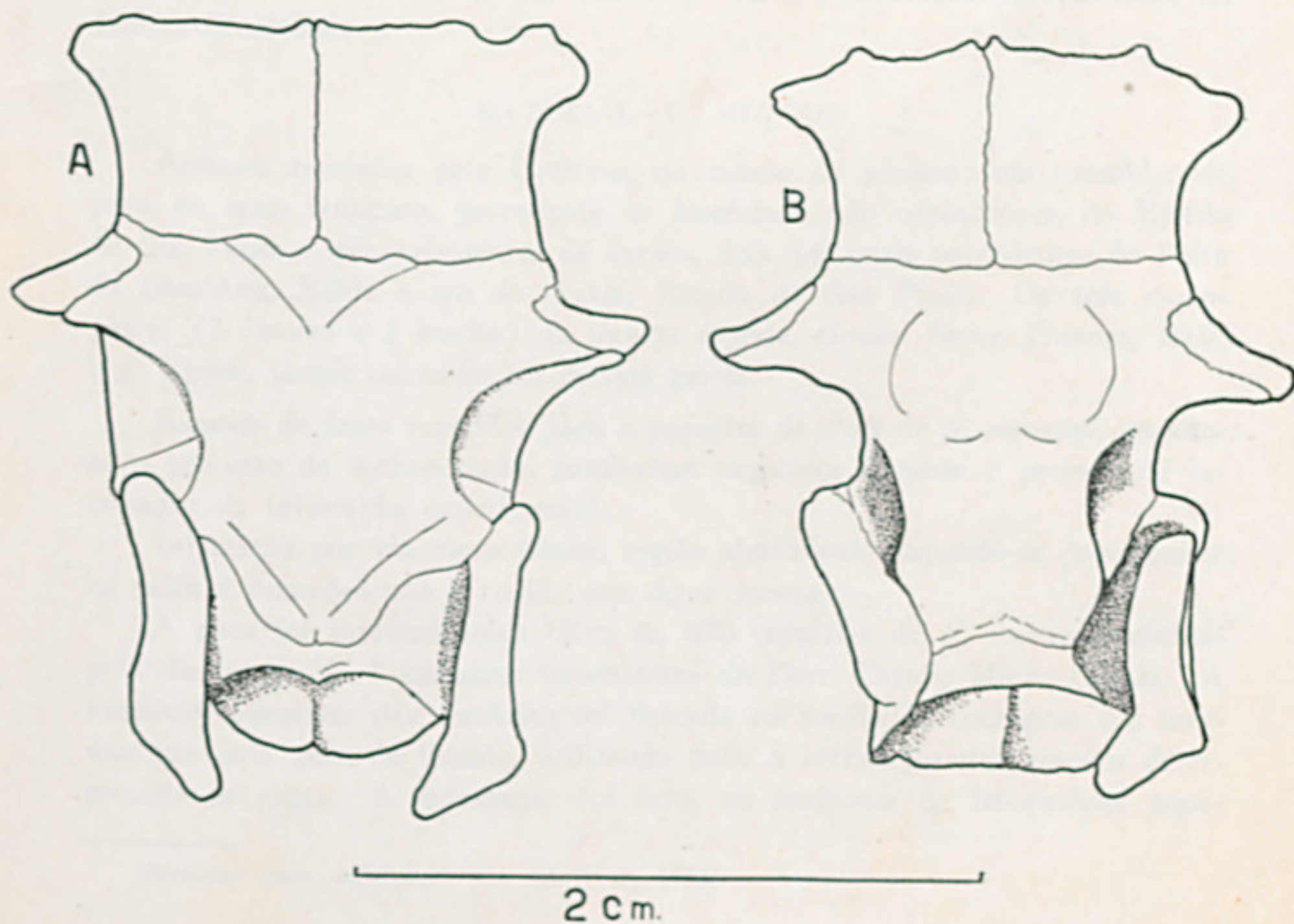


Fig. 7 — Camera lucida drawing of:

A — *Bothrops jararacussu*, dorsal view of skull.

B — *Bothrops brazili*, dorsal view of skull.

